



ADDRESS
RESIDENCES
THE BAY

FLOOR PLANS

EMAAR



ADDRESS RESIDENCES THE BAY

2 BEDROOM TYPE A 2

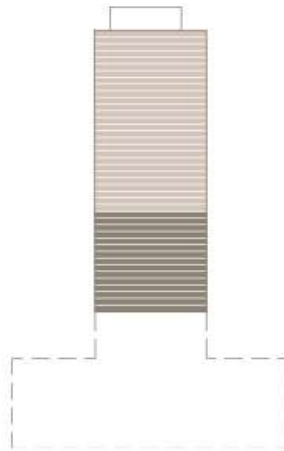
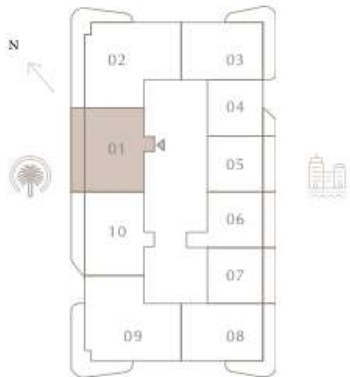
LEVEL 19-33 | UNIT 01

SUITE AREA	1150.55 SQ.FT.	106.89 SQ.M.
BALCONY AREA	257.26 SQ.FT.	23.90 SQ.M.
TOTAL AREA	1407.81 SQ.FT.	130.79 SQ.M.

KEY PLAN LEVEL

19-33

KEY SECTION



Disclaimer : All dimensions are in imperial and metric, and measured from finish to finish excluding construction tolerances. 2. All materials, dimensions, and drawings are approximate only. 3. Information is subject to change without notice, at developer's absolute discretion. 4. Actual area may vary from the stated area. 5. Drawings not to scale. 6. All images used are for illustrative purposes only and do not represent the actual size, features, specifications, fittings, and furnishings. 7. The developer reserves the right to make revisions / alterations, at it's absolute discretion, without any liability whatsoever.



ADDRESS RESIDENCES THE BAY

3 BEDROOM TYPE A 2

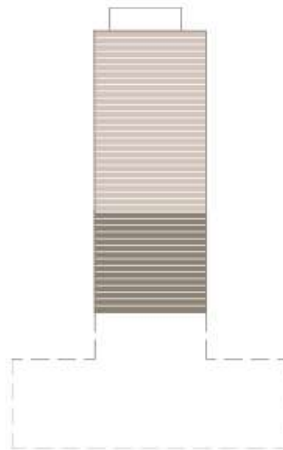
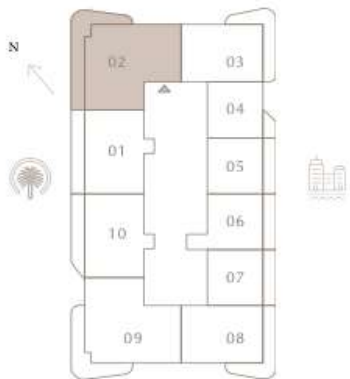
LEVEL 19-33 | UNIT 02

SUITE AREA	1627.93 SQ.FT.	151.24 SQ.M.
BALCONY AREA	430.34 SQ.FT.	39.98 SQ.M.
TOTAL AREA	2058.27 SQ.FT.	191.22 SQ.M.

KEY PLAN LEVEL

19-33

KEY SECTION



Disclaimer : All dimensions are in imperial and metric, and measured from finish to finish excluding construction tolerances. 2. All materials, dimensions, and drawings are approximate only. 3. Information is subject to change without notice, at developer's absolute discretion. 4. Actual area may vary from the stated area. 5. Drawings not to scale. 6. All images used are for illustrative purposes only and do not represent the actual size, features, specifications, fittings, and furnishings. 7. The developer reserves the right to make revisions / alterations, at it's absolute discretion, without any liability whatsoever.



ADDRESS RESIDENCES THE BAY

2 BEDROOM TYPE A 4

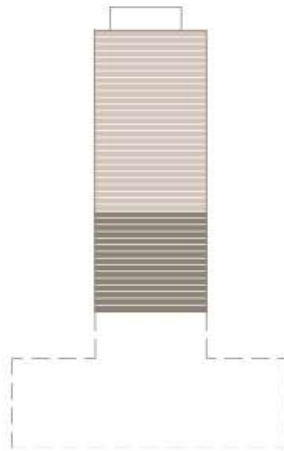
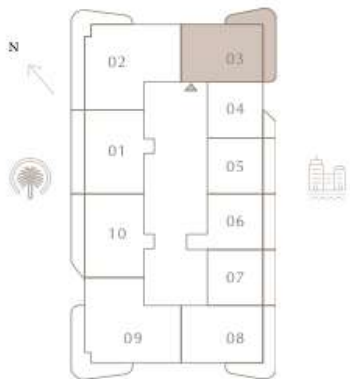
LEVEL 19-33 | UNIT 03

SUITE AREA	1046.36 SQ.FT.	97.21 SQ.M.
BALCONY AREA	273.40 SQ.FT.	25.40 SQ.M.
TOTAL AREA	1319.76 SQ.FT.	122.61 SQ.M.

KEY PLAN LEVEL

19-33

KEY SECTION



Disclaimer : All dimensions are in imperial and metric, and measured from finish to finish excluding construction tolerances. 2. All materials, dimensions, and drawings are approximate only. 3. Information is subject to change without notice, at developer's absolute discretion. 4. Actual area may vary from the stated area. 5. Drawings not to scale. 6. All images used are for illustrative purposes only and do not represent the actual size, features, specifications, fittings, and furnishings. 7. The developer reserves the right to make revisions / alterations, at it's absolute discretion, without any liability whatsoever.



ADDRESS RESIDENCES THE BAY

1 BEDROOM TYPE A 3

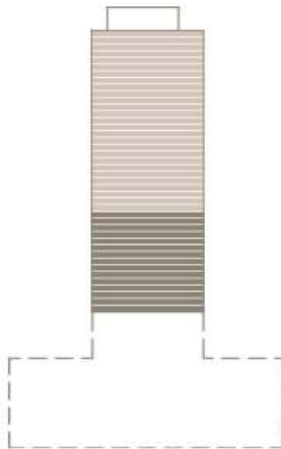
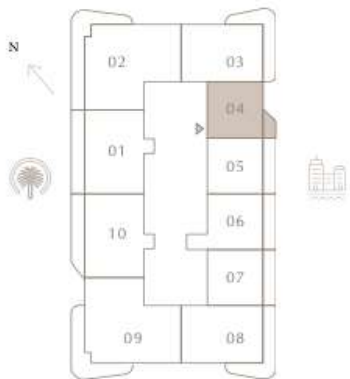
LEVEL 19-33 | UNIT 04

SUITE AREA	699.98 SQ.FT.	65.03 SQ.M.
BALCONY AREA	58.23 SQ.FT.	5.41 SQ.M.
TOTAL AREA	758.21 SQ.FT.	70.44 SQ.M.

KEY PLAN LEVEL

19-33

KEY SECTION



Disclaimer : All dimensions are in imperial and metric, and measured from finish to finish excluding construction tolerances. 2. All materials, dimensions, and drawings are approximate only. 3. Information is subject to change without notice, at developer's absolute discretion. 4. Actual area may vary from the stated area. 5. Drawings not to scale. 6. All images used are for illustrative purposes only and do not represent the actual size, features, specifications, fittings, and furnishings. 7. The developer reserves the right to make revisions / alterations, at it's absolute discretion, without any liability whatsoever.



ADDRESS RESIDENCES THE BAY

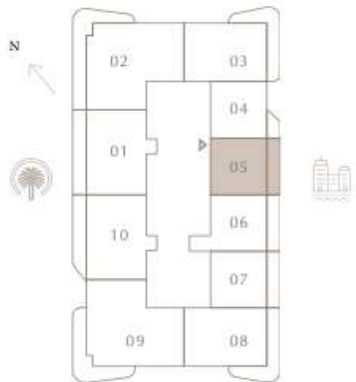
1 BEDROOM TYPE A 1

LEVEL 19-33 | UNIT 05

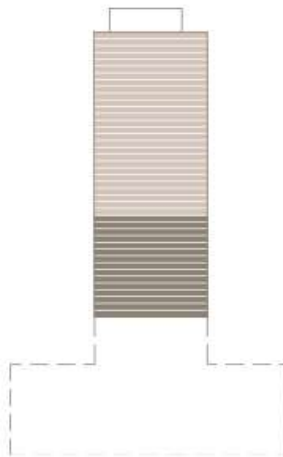
SUITE AREA	702.78 SQ.FT.	65.29 SQ.M.
BALCONY AREA	144.99 SQ.FT.	13.47 SQ.M.
TOTAL AREA	847.77 SQ.FT.	78.76 SQ.M.

KEY PLAN LEVEL

19-33



KEY SECTION



Disclaimer : All dimensions are in imperial and metric, and measured from finish to finish excluding construction tolerances. 2. All materials, dimensions, and drawings are approximate only. 3. Information is subject to change without notice, at developer's absolute discretion. 4. Actual area may vary from the stated area. 5. Drawings not to scale. 6. All images used are for illustrative purposes only and do not represent the actual size, features, specifications, fittings, and furnishings. 7. The developer reserves the right to make revisions / alterations, at it's absolute discretion, without any liability whatsoever.



ADDRESS RESIDENCES THE BAY

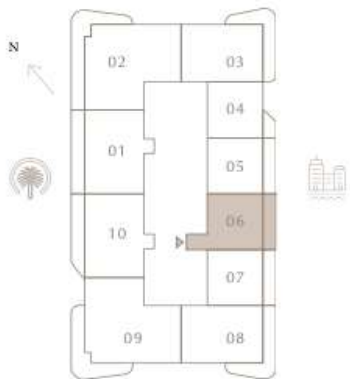
1 BEDROOM TYPE A 2

LEVEL 19-33 | UNIT 06

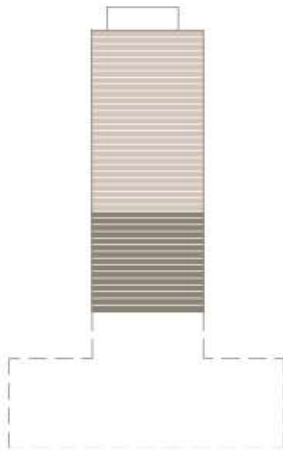
SUITE AREA	768.87 SQ.FT.	71.43 SQ.M.
BALCONY AREA	144.99 SQ.FT.	13.47 SQ.M.
TOTAL AREA	913.86 SQ.FT.	84.90 SQ.M.

KEY PLAN LEVEL

19-33



KEY SECTION



Disclaimer : All dimensions are in imperial and metric, and measured from finish to finish excluding construction tolerances. 2. All materials, dimensions, and drawings are approximate only. 3. Information is subject to change without notice, at developer's absolute discretion. 4. Actual area may vary from the stated area. 5. Drawings not to scale. 6. All images used are for illustrative purposes only and do not represent the actual size, features, specifications, fittings, and furnishings. 7. The developer reserves the right to make revisions / alterations, at it's absolute discretion, without any liability whatsoever.



ADDRESS RESIDENCES THE BAY

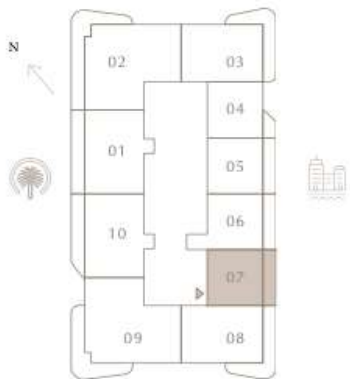
1 BEDROOM TYPE A 1

LEVEL 19-33 | UNIT 07

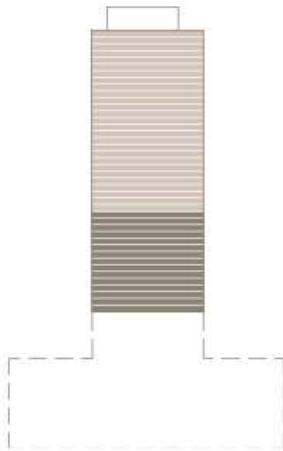
SUITE AREA	699.87 SQ.FT.	65.02 SQ.M.
BALCONY AREA	144.99 SQ.FT.	13.47 SQ.M.
TOTAL AREA	844.86 SQ.FT.	78.49 SQ.M.

KEY PLAN LEVEL

19-33



KEY SECTION



Disclaimer : All dimensions are in imperial and metric, and measured from finish to finish excluding construction tolerances. 2. All materials, dimensions, and drawings are approximate only. 3. Information is subject to change without notice, at developer's absolute discretion. 4. Actual area may vary from the stated area. 5. Drawings not to scale. 6. All images used are for illustrative purposes only and do not represent the actual size, features, specifications, fittings, and furnishings. 7. The developer reserves the right to make revisions / alterations, at it's absolute discretion, without any liability whatsoever.



ADDRESS RESIDENCES THE BAY

2 BEDROOM TYPE A 3

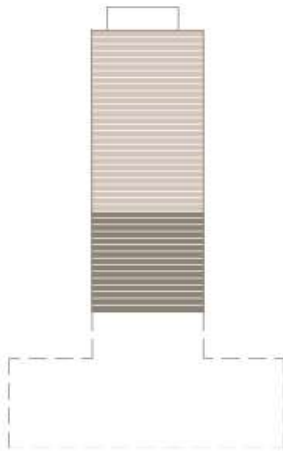
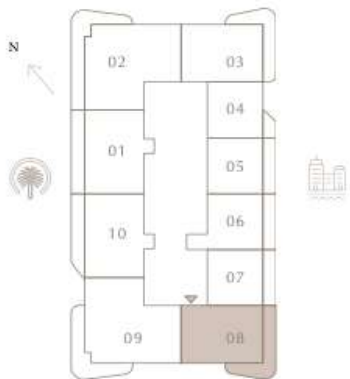
LEVEL 19-33 | UNIT 08

SUITE AREA	1046.79 SQ.FT.	97.25 SQ.M.
BALCONY AREA	272.54 SQ.FT.	25.32 SQ.M.
TOTAL AREA	1319.33 SQ.FT.	122.57 SQ.M.

KEY PLAN LEVEL

19-33

KEY SECTION



Disclaimer : All dimensions are in imperial and metric, and measured from finish to finish excluding construction tolerances. 2. All materials, dimensions, and drawings are approximate only. 3. Information is subject to change without notice, at developer's absolute discretion. 4. Actual area may vary from the stated area. 5. Drawings not to scale. 6. All images used are for illustrative purposes only and do not represent the actual size, features, specifications, fittings, and furnishings. 7. The developer reserves the right to make revisions / alterations, at it's absolute discretion, without any liability whatsoever.



ADDRESS RESIDENCES THE BAY

3 BEDROOM TYPE A 1

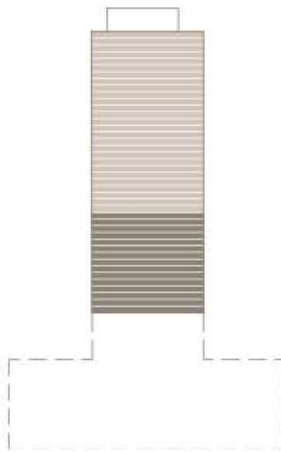
LEVEL 19-33 | UNIT 09

SUITE AREA	1627.93 SQ.FT.	151.24 SQ.M.
BALCONY AREA	342.29 SQ.FT.	31.80 SQ.M.
TOTAL AREA	1970.22 SQ.FT.	183.04 SQ.M.

KEY PLAN LEVEL

19-33

KEY SECTION



Disclaimer : All dimensions are in imperial and metric, and measured from finish to finish excluding construction tolerances. 2. All materials, dimensions, and drawings are approximate only. 3. Information is subject to change without notice, at developer's absolute discretion. 4. Actual area may vary from the stated area. 5. Drawings not to scale. 6. All images used are for illustrative purposes only and do not represent the actual size, features, specifications, fittings, and furnishings. 7. The developer reserves the right to make revisions / alterations, at it's absolute discretion, without any liability whatsoever.



ADDRESS RESIDENCES THE BAY

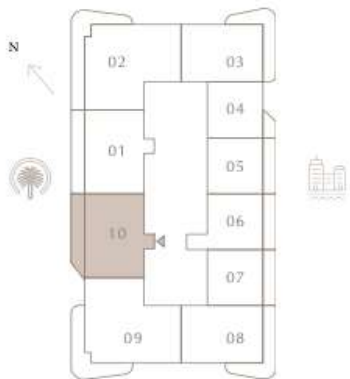
2 BEDROOM TYPE A 1

LEVEL 19-33 | UNIT 10

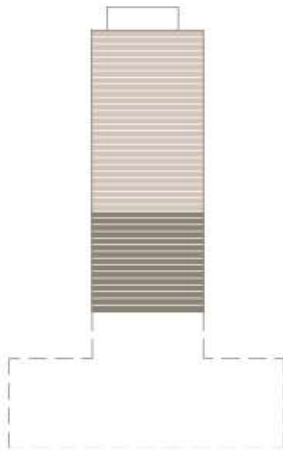
SUITE AREA	1150.55 SQ.FT.	106.89 SQ.M.
BALCONY AREA	233.15 SQ.FT.	21.66 SQ.M.
TOTAL AREA	1383.70 SQ.FT.	128.55 SQ.M.

KEY PLAN LEVEL

19-33



KEY SECTION



Disclaimer : All dimensions are in imperial and metric, and measured from finish to finish excluding construction tolerances. 2. All materials, dimensions, and drawings are approximate only. 3. Information is subject to change without notice, at developer's absolute discretion. 4. Actual area may vary from the stated area. 5. Drawings not to scale. 6. All images used are for illustrative purposes only and do not represent the actual size, features, specifications, fittings, and furnishings. 7. The developer reserves the right to make revisions / alterations, at it's absolute discretion, without any liability whatsoever.



ADDRESS RESIDENCES THE BAY

2 BEDROOM TYPE D 4

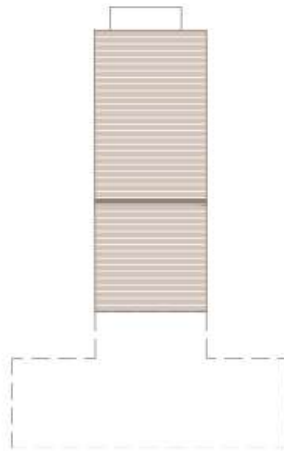
LEVEL 35 | UNIT 01

SUITE AREA	1485.31 SQ.FT.	137.99 SQ.M.
BALCONY AREA	343.05 SQ.FT.	31.87 SQ.M.
TOTAL AREA	1828.36 SQ.FT.	169.86 SQ.M.

KEY PLAN LEVEL

35

KEY SECTION



Disclaimer : All dimensions are in imperial and metric, and measured from finish to finish excluding construction tolerances. 2. All materials, dimensions, and drawings are approximate only. 3. Information is subject to change without notice, at developer's absolute discretion. 4. Actual area may vary from the stated area. 5. Drawings not to scale. 6. All images used are for illustrative purposes only and do not represent the actual size, features, specifications, fittings, and furnishings. 7. The developer reserves the right to make revisions / alterations, at it's absolute discretion, without any liability whatsoever.



ADDRESS RESIDENCES THE BAY

3 BEDROOM TYPE C 4

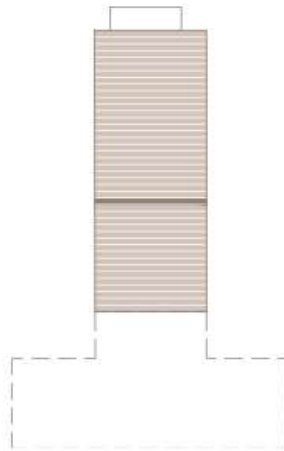
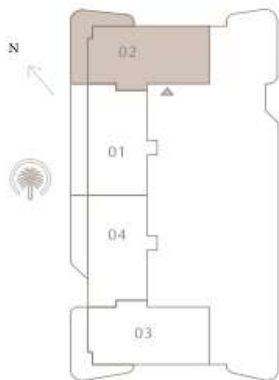
LEVEL 35 | UNIT 02

SUITE AREA	1597.58 SQ.FT.	148.42 SQ.M.
BALCONY AREA	344.55 SQ.FT.	32.01 SQ.M.
TOTAL AREA	1942.13 SQ.FT.	180.43 SQ.M.

KEY PLAN LEVEL

35

KEY SECTION



Disclaimer : All dimensions are in imperial and metric, and measured from finish to finish excluding construction tolerances. 2. All materials, dimensions, and drawings are approximate only. 3. Information is subject to change without notice, at developer's absolute discretion. 4. Actual area may vary from the stated area. 5. Drawings not to scale. 6. All images used are for illustrative purposes only and do not represent the actual size, features, specifications, fittings, and furnishings. 7. The developer reserves the right to make revisions / alterations, at it's absolute discretion, without any liability whatsoever.



ADDRESS RESIDENCES THE BAY

3 BEDROOM TYPE C 3

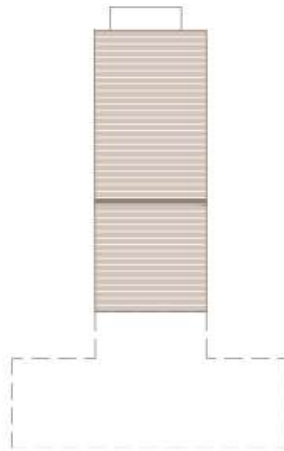
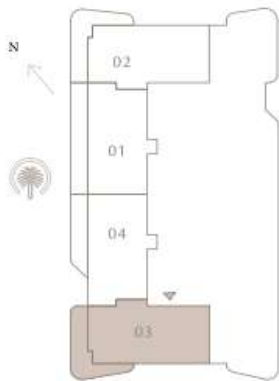
LEVEL 35 | UNIT 03

SUITE AREA	1597.79 SQ.FT.	148.44 SQ.M.
BALCONY AREA	342.29 SQ.FT.	31.80 SQ.M.
TOTAL AREA	1940.08 SQ.FT.	180.24 SQ.M.

KEY PLAN LEVEL

35

KEY SECTION



Disclaimer : All dimensions are in imperial and metric, and measured from finish to finish excluding construction tolerances. 2. All materials, dimensions, and drawings are approximate only. 3. Information is subject to change without notice, at developer's absolute discretion. 4. Actual area may vary from the stated area. 5. Drawings not to scale. 6. All images used are for illustrative purposes only and do not represent the actual size, features, specifications, fittings, and furnishings. 7. The developer reserves the right to make revisions / alterations, at it's absolute discretion, without any liability whatsoever.



ADDRESS RESIDENCES THE BAY

2 BEDROOM TYPE D 3

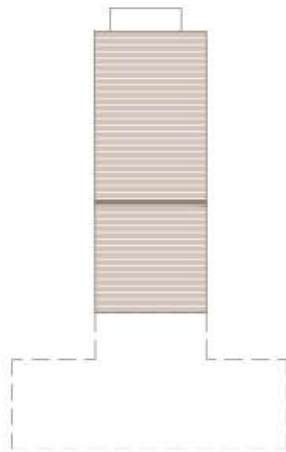
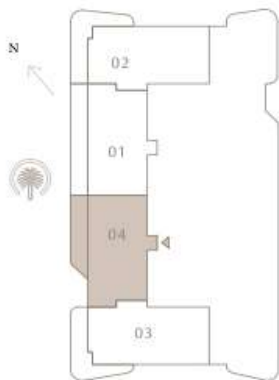
LEVEL 35 | UNIT 04

SUITE AREA	1485.74 SQ.FT.	138.03 SQ.M.
BALCONY AREA	233.15 SQ.FT.	21.66 SQ.M.
TOTAL AREA	1718.89 SQ.FT.	159.69 SQ.M.

KEY PLAN LEVEL

35

KEY SECTION



Disclaimer : All dimensions are in imperial and metric, and measured from finish to finish excluding construction tolerances. 2. All materials, dimensions, and drawings are approximate only. 3. Information is subject to change without notice, at developer's absolute discretion. 4. Actual area may vary from the stated area. 5. Drawings not to scale. 6. All images used are for illustrative purposes only and do not represent the actual size, features, specifications, fittings, and furnishings. 7. The developer reserves the right to make revisions / alterations, at it's absolute discretion, without any liability whatsoever.



ADDRESS RESIDENCES THE BAY

2 BEDROOM TYPE D 2

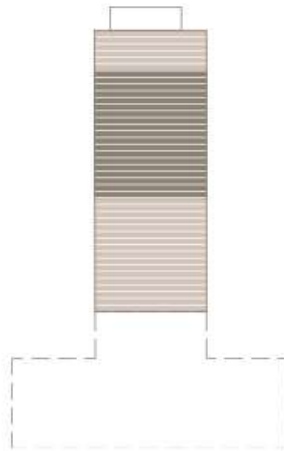
LEVEL 36-54 | UNIT 01

SUITE AREA	1493.82 SQ.FT.	138.78 SQ.M.
BALCONY AREA	343.05 SQ.FT.	31.87 SQ.M.
TOTAL AREA	1836.87 SQ.FT.	170.65 SQ.M.

KEY PLAN LEVEL

36-54

KEY SECTION



Disclaimer : All dimensions are in imperial and metric, and measured from finish to finish excluding construction tolerances. 2. All materials, dimensions, and drawings are approximate only. 3. Information is subject to change without notice, at developer's absolute discretion. 4. Actual area may vary from the stated area. 5. Drawings not to scale. 6. All images used are for illustrative purposes only and do not represent the actual size, features, specifications, fittings, and furnishings. 7. The developer reserves the right to make revisions / alterations, at it's absolute discretion, without any liability whatsoever.



ADDRESS RESIDENCES THE BAY

3 BEDROOM TYPE C 2

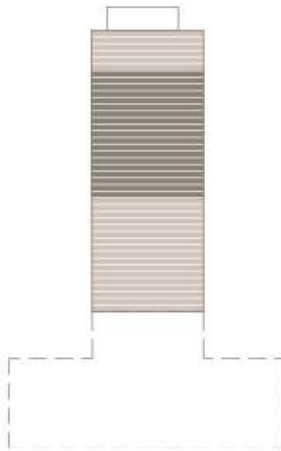
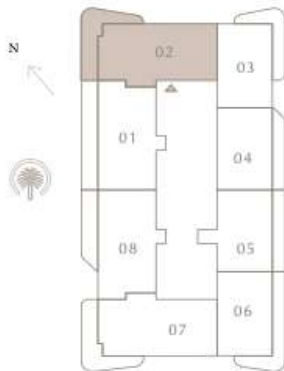
LEVEL 36-54 | UNIT 02

SUITE AREA	1600.06 SQ.FT.	148.65 SQ.M.
BALCONY AREA	344.55 SQ.FT.	32.01 SQ.M.
TOTAL AREA	1944.61 SQ.FT.	180.66 SQ.M.

KEY PLAN LEVEL

36-54

KEY SECTION



Disclaimer : All dimensions are in imperial and metric, and measured from finish to finish excluding construction tolerances. 2. All materials, dimensions, and drawings are approximate only. 3. Information is subject to change without notice, at developer's absolute discretion. 4. Actual area may vary from the stated area. 5. Drawings not to scale. 6. All images used are for illustrative purposes only and do not represent the actual size, features, specifications, fittings, and furnishings. 7. The developer reserves the right to make revisions / alterations, at it's absolute discretion, without any liability whatsoever.



ADDRESS RESIDENCES THE BAY

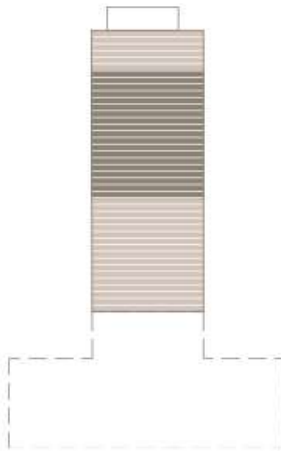
2 BEDROOM TYPE B 2

LEVEL 36-54 | UNIT 03

SUITE AREA	1077.36 SQ.FT.	100.09 SQ.M.
BALCONY AREA	273.40 SQ.FT.	25.40 SQ.M.
TOTAL AREA	1350.76 SQ.FT.	125.49 SQ.M.

KEY PLAN LEVEL
36-54

KEY SECTION



Disclaimer : All dimensions are in imperial and metric, and measured from finish to finish excluding construction tolerances. 2. All materials, dimensions, and drawings are approximate only. 3. Information is subject to change without notice, at developer's absolute discretion. 4. Actual area may vary from the stated area. 5. Drawings not to scale. 6. All images used are for illustrative purposes only and do not represent the actual size, features, specifications, fittings, and furnishings. 7. The developer reserves the right to make revisions / alterations, at it's absolute discretion, without any liability whatsoever.



ADDRESS RESIDENCES THE BAY

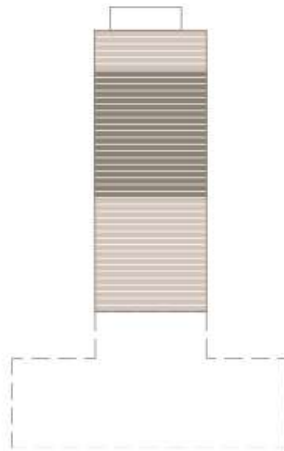
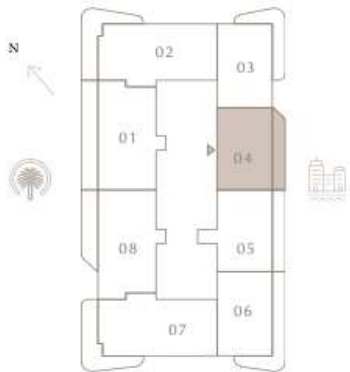
2 BEDROOM TYPE C 2

LEVEL 36-54 | UNIT 04

SUITE AREA	1061.11 SQ.FT.	98.58 SQ.M.
BALCONY AREA	203.22 SQ.FT.	18.88 SQ.M.
TOTAL AREA	1264.33 SQ.FT.	117.46 SQ.M.

KEY PLAN LEVEL
36-54

KEY SECTION



Disclaimer : All dimensions are in imperial and metric, and measured from finish to finish excluding construction tolerances. 2. All materials, dimensions, and drawings are approximate only. 3. Information is subject to change without notice, at developer's absolute discretion. 4. Actual area may vary from the stated area. 5. Drawings not to scale. 6. All images used are for illustrative purposes only and do not represent the actual size, features, specifications, fittings, and furnishings. 7. The developer reserves the right to make revisions / alterations, at it's absolute discretion, without any liability whatsoever.



ADDRESS RESIDENCES THE BAY

2 BEDROOM TYPE C 1

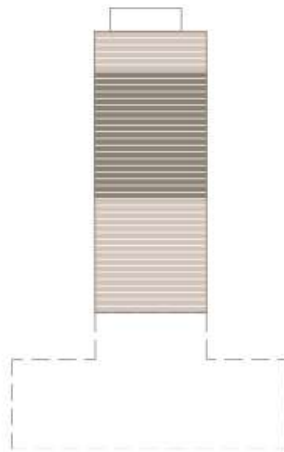
LEVEL 36-54 | UNIT 05

SUITE AREA	1127.41 SQ.FT.	104.74 SQ.M.
BALCONY AREA	217.43 SQ.FT.	20.20 SQ.M.
TOTAL AREA	1344.84 SQ.FT.	124.94 SQ.M.

KEY PLAN LEVEL

36-54

KEY SECTION



Disclaimer : All dimensions are in imperial and metric, and measured from finish to finish excluding construction tolerances. 2. All materials, dimensions, and drawings are approximate only. 3. Information is subject to change without notice, at developer's absolute discretion. 4. Actual area may vary from the stated area. 5. Drawings not to scale. 6. All images used are for illustrative purposes only and do not represent the actual size, features, specifications, fittings, and furnishings. 7. The developer reserves the right to make revisions / alterations, at it's absolute discretion, without any liability whatsoever.


ADDRESS
RESIDENCES
THE BAY

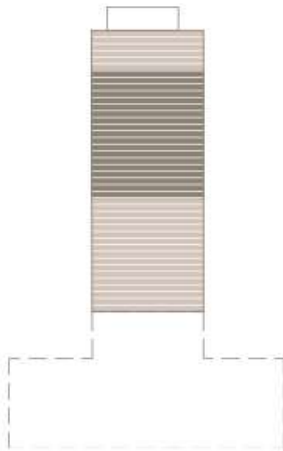
2 BEDROOM TYPE B 1

LEVEL 36-54 | UNIT 06

SUITE AREA	1077.14 SQ.FT.	100.07 SQ.M.
BALCONY AREA	344.98 SQ.FT.	32.05 SQ.M.
TOTAL AREA	1422.12 SQ.FT.	132.12 SQ.M.

KEY PLAN LEVEL
36-54

KEY SECTION



Disclaimer : All dimensions are in imperial and metric, and measured from finish to finish excluding construction tolerances. 2. All materials, dimensions, and drawings are approximate only. 3. Information is subject to change without notice, at developer's absolute discretion. 4. Actual area may vary from the stated area. 5. Drawings not to scale. 6. All images used are for illustrative purposes only and do not represent the actual size, features, specifications, fittings, and furnishings. 7. The developer reserves the right to make revisions / alterations, at it's absolute discretion, without any liability whatsoever.



ADDRESS RESIDENCES THE BAY

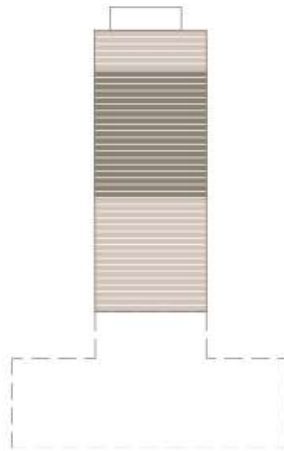
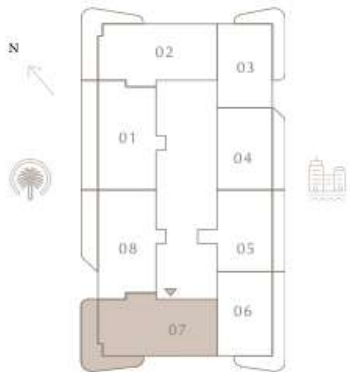
3 BEDROOM TYPE C 1

LEVEL 36-54 | UNIT 07

SUITE AREA	1600.16 SQ.FT.	148.66 SQ.M.
BALCONY AREA	342.29 SQ.FT.	31.80 SQ.M.
TOTAL AREA	1942.45 SQ.FT.	180.46 SQ.M.

KEY PLAN LEVEL
36-54

KEY SECTION



Disclaimer : All dimensions are in imperial and metric, and measured from finish to finish excluding construction tolerances. 2. All materials, dimensions, and drawings are approximate only. 3. Information is subject to change without notice, at developer's absolute discretion. 4. Actual area may vary from the stated area. 5. Drawings not to scale. 6. All images used are for illustrative purposes only and do not represent the actual size, features, specifications, fittings, and furnishings. 7. The developer reserves the right to make revisions / alterations, at it's absolute discretion, without any liability whatsoever.



ADDRESS RESIDENCES THE BAY

2 BEDROOM TYPE D 1

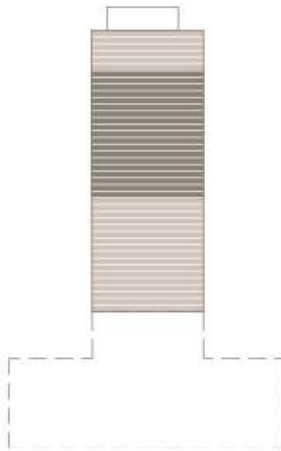
LEVEL 36-54 | UNIT 08

SUITE AREA	1494.25 SQ.FT.	138.82 SQ.M.
BALCONY AREA	233.15 SQ.FT.	21.66 SQ.M.
TOTAL AREA	1727.40 SQ.FT.	160.48 SQ.M.

KEY PLAN LEVEL

36-54

KEY SECTION



Disclaimer : All dimensions are in imperial and metric, and measured from finish to finish excluding construction tolerances. 2. All materials, dimensions, and drawings are approximate only. 3. Information is subject to change without notice, at developer's absolute discretion. 4. Actual area may vary from the stated area. 5. Drawings not to scale. 6. All images used are for illustrative purposes only and do not represent the actual size, features, specifications, fittings, and furnishings. 7. The developer reserves the right to make revisions / alterations, at it's absolute discretion, without any liability whatsoever.



ADDRESS RESIDENCES THE BAY

2 BEDROOM TYPE D 2

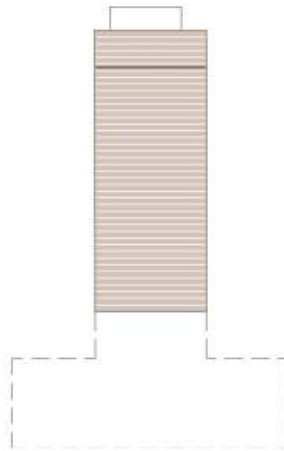
LEVEL 55 | UNIT 01

SUITE AREA	1493.82 SQ.FT.	138.78 SQ.M.
BALCONY AREA	343.05 SQ.FT.	31.87 SQ.M.
TOTAL AREA	1836.87 SQ.FT.	170.65 SQ.M.

KEY PLAN LEVEL

55

KEY SECTION



Disclaimer : All dimensions are in imperial and metric, and measured from finish to finish excluding construction tolerances. 2. All materials, dimensions, and drawings are approximate only. 3. Information is subject to change without notice, at developer's absolute discretion. 4. Actual area may vary from the stated area. 5. Drawings not to scale. 6. All images used are for illustrative purposes only and do not represent the actual size, features, specifications, fittings, and furnishings. 7. The developer reserves the right to make revisions / alterations, at it's absolute discretion, without any liability whatsoever.



ADDRESS RESIDENCES THE BAY

3 BEDROOM TYPE C 2

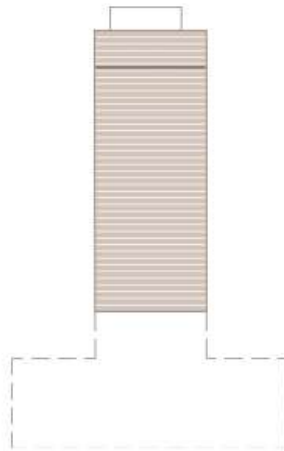
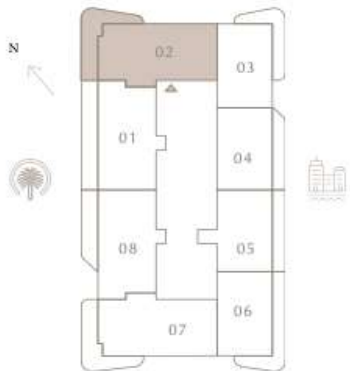
LEVEL 55 | UNIT 02

SUITE AREA	1600.06 SQ.FT.	148.65 SQ.M.
BALCONY AREA	344.55 SQ.FT.	32.01 SQ.M.
TOTAL AREA	1944.61 SQ.FT.	180.66 SQ.M.

KEY PLAN LEVEL

55

KEY SECTION



Disclaimer : All dimensions are in imperial and metric, and measured from finish to finish excluding construction tolerances. 2. All materials, dimensions, and drawings are approximate only. 3. Information is subject to change without notice, at developer's absolute discretion. 4. Actual area may vary from the stated area. 5. Drawings not to scale. 6. All images used are for illustrative purposes only and do not represent the actual size, features, specifications, fittings, and furnishings. 7. The developer reserves the right to make revisions / alterations, at it's absolute discretion, without any liability whatsoever.



ADDRESS RESIDENCES THE BAY

2 BEDROOM TYPE B 2

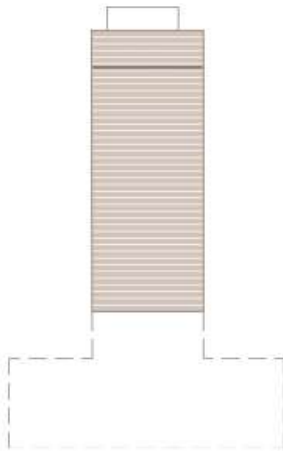
LEVEL 55 | UNIT 03

SUITE AREA	1077.36 SQ.FT.	100.09 SQ.M.
BALCONY AREA	273.40 SQ.FT.	25.40 SQ.M.
TOTAL AREA	1350.76 SQ.FT.	125.49 SQ.M.

KEY PLAN LEVEL

55

KEY SECTION



Disclaimer : All dimensions are in imperial and metric, and measured from finish to finish excluding construction tolerances. 2. All materials, dimensions, and drawings are approximate only. 3. Information is subject to change without notice, at developer's absolute discretion. 4. Actual area may vary from the stated area. 5. Drawings not to scale. 6. All images used are for illustrative purposes only and do not represent the actual size, features, specifications, fittings, and furnishings. 7. The developer reserves the right to make revisions / alterations, at it's absolute discretion, without any liability whatsoever.



ADDRESS RESIDENCES THE BAY

2 BEDROOM TYPE C 2

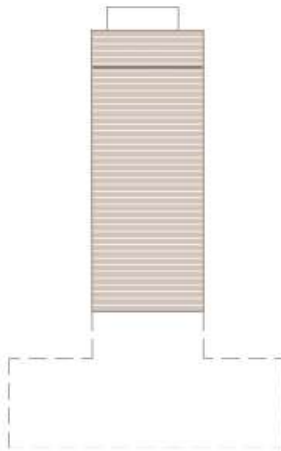
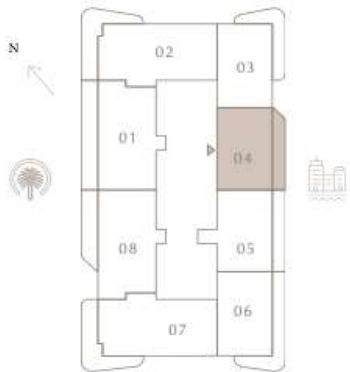
LEVEL 55 | UNIT 04

SUITE AREA	1061.11 SQ.FT.	98.58 SQ.M.
BALCONY AREA	203.22 SQ.FT.	18.88 SQ.M.
TOTAL AREA	1264.33 SQ.FT.	117.46 SQ.M.

KEY PLAN LEVEL

55

KEY SECTION



Disclaimer : All dimensions are in imperial and metric, and measured from finish to finish excluding construction tolerances. 2. All materials, dimensions, and drawings are approximate only. 3. Information is subject to change without notice, at developer's absolute discretion. 4. Actual area may vary from the stated area. 5. Drawings not to scale. 6. All images used are for illustrative purposes only and do not represent the actual size, features, specifications, fittings, and furnishings. 7. The developer reserves the right to make revisions / alterations, at it's absolute discretion, without any liability whatsoever.



ADDRESS RESIDENCES THE BAY

2 BEDROOM TYPE C 1

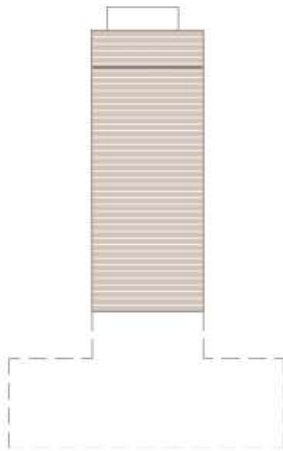
LEVEL 55 | UNIT 05

SUITE AREA	1127.41 SQ.FT.	104.74 SQ.M.
BALCONY AREA	217.43 SQ.FT.	20.20 SQ.M.
TOTAL AREA	1344.84 SQ.FT.	124.94 SQ.M.

KEY PLAN LEVEL

55

KEY SECTION



Disclaimer : All dimensions are in imperial and metric, and measured from finish to finish excluding construction tolerances. 2. All materials, dimensions, and drawings are approximate only. 3. Information is subject to change without notice, at developer's absolute discretion. 4. Actual area may vary from the stated area. 5. Drawings not to scale. 6. All images used are for illustrative purposes only and do not represent the actual size, features, specifications, fittings, and furnishings. 7. The developer reserves the right to make revisions / alterations, at it's absolute discretion, without any liability whatsoever.



ADDRESS RESIDENCES THE BAY

2 BEDROOM TYPE B 1

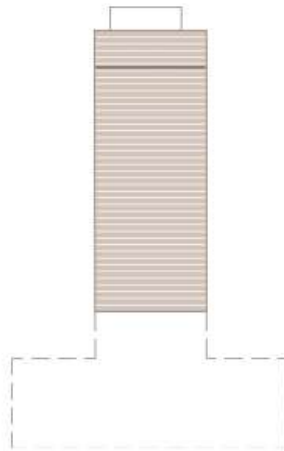
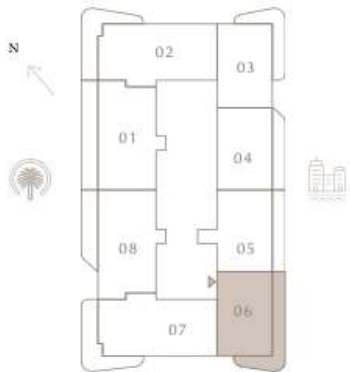
LEVEL 55 | UNIT 06

SUITE AREA	1077.14 SQ.FT.	100.07 SQ.M.
BALCONY AREA	344.98 SQ.FT.	32.05 SQ.M.
TOTAL AREA	1422.12 SQ.FT.	132.12 SQ.M.

KEY PLAN LEVEL

55

KEY SECTION



Disclaimer : All dimensions are in imperial and metric, and measured from finish to finish excluding construction tolerances. 2. All materials, dimensions, and drawings are approximate only. 3. Information is subject to change without notice, at developer's absolute discretion. 4. Actual area may vary from the stated area. 5. Drawings not to scale. 6. All images used are for illustrative purposes only and do not represent the actual size, features, specifications, fittings, and furnishings. 7. The developer reserves the right to make revisions / alterations, at it's absolute discretion, without any liability whatsoever.



ADDRESS RESIDENCES THE BAY

3 BEDROOM TYPE C 1

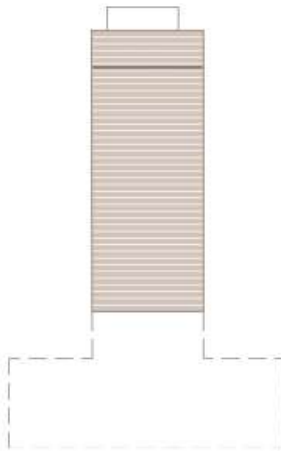
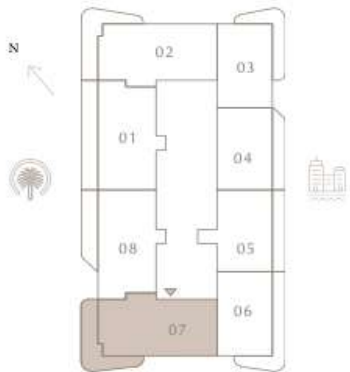
LEVEL 55 | UNIT 07

SUITE AREA	1600.16 SQ.FT.	148.66 SQ.M.
BALCONY AREA	342.29 SQ.FT.	31.80 SQ.M.
TOTAL AREA	1942.45 SQ.FT.	180.46 SQ.M.

KEY PLAN LEVEL

55

KEY SECTION



Disclaimer : All dimensions are in imperial and metric, and measured from finish to finish excluding construction tolerances. 2. All materials, dimensions, and drawings are approximate only. 3. Information is subject to change without notice, at developer's absolute discretion. 4. Actual area may vary from the stated area. 5. Drawings not to scale. 6. All images used are for illustrative purposes only and do not represent the actual size, features, specifications, fittings, and furnishings. 7. The developer reserves the right to make revisions / alterations, at it's absolute discretion, without any liability whatsoever.



ADDRESS RESIDENCES THE BAY

3 BEDROOM TYPE C 1

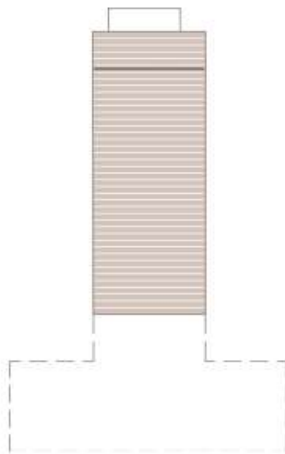
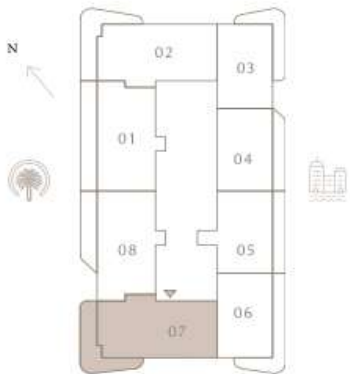
LEVEL 55 | UNIT 07

SUITE AREA	1600.16 SQ.FT.	148.66 SQ.M.
BALCONY AREA	342.29 SQ.FT.	31.80 SQ.M.
TOTAL AREA	1942.45 SQ.FT.	180.46 SQ.M.

KEY PLAN LEVEL

55

KEY SECTION



Disclaimer : All dimensions are in imperial and metric, and measured from finish to finish excluding construction tolerances. 2. All materials, dimensions, and drawings are approximate only. 3. Information is subject to change without notice, at developer's absolute discretion. 4. Actual area may vary from the stated area. 5. Drawings not to scale. 6. All images used are for illustrative purposes only and do not represent the actual size, features, specifications, fittings, and furnishings. 7. The developer reserves the right to make revisions / alterations, at it's absolute discretion, without any liability whatsoever.



ADDRESS RESIDENCES THE BAY

2 BEDROOM TYPE D 1

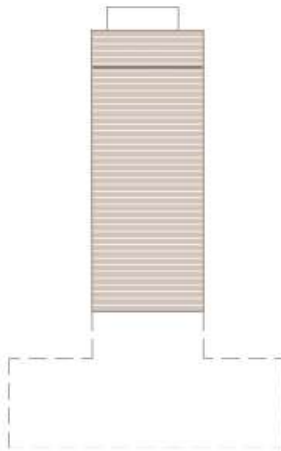
LEVEL 55 | UNIT 08

SUITE AREA	1494.25 SQ.FT.	138.82 SQ.M.
BALCONY AREA	233.15 SQ.FT.	21.66 SQ.M.
TOTAL AREA	1727.40 SQ.FT.	160.48 SQ.M.

KEY PLAN LEVEL

55

KEY SECTION



Disclaimer : All dimensions are in imperial and metric, and measured from finish to finish excluding construction tolerances. 2. All materials, dimensions, and drawings are approximate only. 3. Information is subject to change without notice, at developer's absolute discretion. 4. Actual area may vary from the stated area. 5. Drawings not to scale. 6. All images used are for illustrative purposes only and do not represent the actual size, features, specifications, fittings, and furnishings. 7. The developer reserves the right to make revisions / alterations, at it's absolute discretion, without any liability whatsoever.